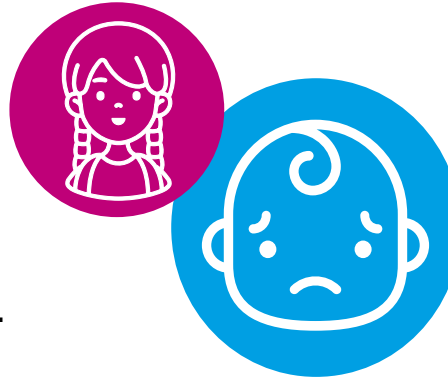




Does your child need  
urgent healthcare?

Be sure to go to the right place.



## Temporary closure of children's A&Es at UCLH and the Royal Free Hospital



**Some children and young people's services have temporarily changed as part of our Covid-19 response**

Anyone under 18 and needing accident or emergency care should go to the nearest alternative local hospital:

- Whittington Hospital
- Barnet Hospital
- North Middlesex University Hospital
- St Mary's Hospital
- Royal London Hospital

UCLH and Royal Free A&Es remain open for adults

For life-threatening emergencies call 999 straight away.

For more info go to <http://bit.ly/emergency-paediatric>